

8 Julayi 2026

Inombolo Yesalathiso ye-DEDEAT: Ayikagqitywa

Isaziso senkqubo yokufumana imvume yokusingqongileyo yophuhliso olucetywayo oludibanisa iindawo zorhwebo nezokuhlala kwisiqephu sama-94 seFama engu-60 e-Aliwal North, kuMasipala Wengingqi iWalter Sisulu.

IINKCUKACHA ZEPROJEKTHI:

I-Moira Cloete Environmental Consulting ichongiwe yi-Agewell Investments CC (uNksz Tina Surtie) ukuba iqhube inkqubo yoGunyaziso lweNdalo yophuhliso olucetywayo lwezorhwebo kunye neendawo zokuhlala ezixutyiweyo kwinxalenye 94 yefama 60 e-Aliwal North, kuMasipala weNgingqi waseWalter Sisulu.

I-Agewell Investments CC icebisa ukwakha uphuhliso lweendawo zokuhlala ezixutyiweyo. Luza kugubungela iihektare ezili-19.98 kwaye luqulathe indawo yorhwebo, iiyunithi zezindlu ezisibhozo ezidibeneyo kunye neendlela zikawonke-wonke ezingama-36m.

linkonzo ezikhoyo zithathwa njengezaneleyo ukuxhasa uphuhliso:

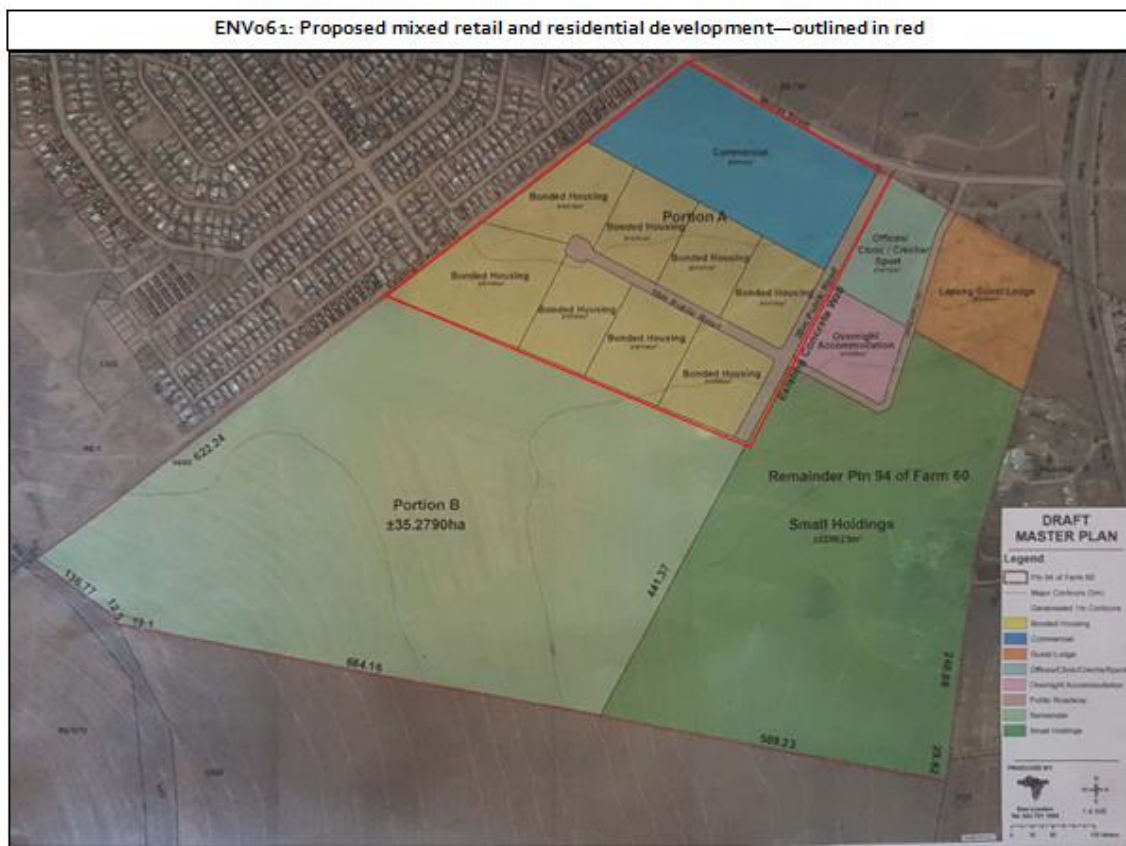
- Amanzi afikeleleka kubonelelo lukamasipala olukwiMurray Street, okwaziwa ngokuba yiMaxi's Drive. Ukongeza, kukho imingxunya emibini exhotyiswe ngeepompo ze-mono ukongeza ubonelelo lwamanzi. Amanzi amdaka/indle ingathunyelwa kumgca wendle okhoyo waseMaletswai East, onomthamo owaneleyo.
- Umbane uvela kumgca weSprings 11KV, kunye ne-transformer ye-200 KVa enika umbane kwindawo nge-radial feed.
- Indawo yokungena yangoku yesiza ikwiMurray Street, malunga neemitha ezili-170 ukusuka kwindlela enkulu i-N6.
- Ngokwejografi, le ndawo ineemeko ezilungileyo zokwakha izindlu kunye nezakhiwo ezinemigangatho enye.

INDAWO YEPROJEKTHI:

Uphuhliso olucetywayo luza kwenziwa kwiNdxalenye yama-94 yeFama iBuffelsvallei 60 e-Aliwal North, kuMasipala weNgingqi iWalter Sisulu. Imi ecaleni kweSitalato iMurray, kufutshane nendlela i-N6.



Umzobo 1: Isicwangciso esisisiseko sendawo yophuhliso olucetywayo.



Umfanekiso 2: Uyilo lophuhliso olucetywayo luchazwe ngombala obomvu.

IIMFUNO ZE-EIA

Esi siculo siza kufuna imvume yokusingqongileyo evela kwiSebe loPhuhliso loQoqosho, iMicimbi yezeNdalo kunye noKhenketho (DEDEAT) iOfisi yeSithili yaseJoe Gqabi phantsi kweNkqubo yoVavanyo oluSisiseko enye kwindawo yeprojekthi ecetywayo.

NgokweMigaqo ye-EIA (2014, njengoko ilungisiwe), eyabhengezwa phantsi koMthetho woLawulo lwezeNdalo weSizwe (uMthetho Nombolo 107 ka-1998) (i-NEMA), eminye imisebenzi edwelisiweyo

ichaziwe apho kufuneka khona inkqubo yoVavanyo oluSisiseko (i-GNR 327 kunye ne-GNR 324) okanye iNkqubo epheleleyo yoVavanyo kunye ne-EIA (i-GNR 325).

Le misebenzi ilandelayo edwelisiweyo iyasebenza ekwakhiweni kweprojekthi ecetywayo:

GNR 327 Listing Notice 1 of 2014, as amended:	
I-GNR 327 Inqaku lesi-12: Uphuhliso lwe— (ii) iziseko zophuhliso okanye izakhiwo ezithatha indawo engaphezulu okanye elingana neemitha zesikwere ezili-100 apho olu phuhliso lwenzeka khona— (a) ngaphakathi kumjelo wamanzi;	<i>Kukho ichibi elincinci okanye idama kwesi siza, eliza kuphuhliswa ngaphakathi okanye kufutshane nalo.</i>
I-GNR 327 Into 27: Ukucocwa kwendawo eyihektare e-1 nangaphezulu, kodwa ngaphantsi kwehektare ezingama-20 zezityalo zemveli.	<i>Indawo eyi-19.98 yeehektare iza kucocwa ukuze kuphuhliswe.</i>
I-GNR 327 Into 28: Uphuhliso lwezindlu zokuhlala, oluxutyiweyo, oluthengisayo, olurhwebayo, oluyimizi-mveliso okanye oluneziko apho loo mhlaba wawusetyenziselwa ezolimo, ukulima izilwanyana zasendle, iinjongo zokukhwela amahashe okanye ukulima amahlathi ngomhla woku-1 ku-Epreli 1998 okanye emva koko kwaye apho olo phuhliso: (i) luya kwenzeka ngaphakathi kwindawo yasezidolophini, apho umhlaba wonke oza kuphuhliswa ungaphezulu kwehektare ezi-5; okanye	<i>Le ndawo ayisetyenziselwanga ezolimo; nangona kunjalo ibekwe njengezolimo. Uphuhliso olucetywayo yi-19.98ha ngaphakathi kwendawo yasezidolophini. (Isicelo sokutshintshwa kommandla siyaqhubeka).</i>

IIMVUME EZONGEZELELWEYO EZIFUNEKAYO NGOKOMTHETHO

- Imvume ngokweCandelo lama-38 loMthetho i-National Heritage Resources Act 25 ka-1999.
- Isicelo selayisenisi yokusetyenziswa kwamanzi ngokwamaCandelo ama-21 nama-27 oMthetho i-National Water Act ka-1998.

INKQUBO YE-EIA YOVAVANYO LWEMPEMBELELO KWINDALO

Inkqubo ye-EIA iza kubandakanya la manqanaba alandelayo eprojekthi:

1. Isicelo: Ifomu yesicelo sokugunyaziswa iya kungeniswa kwi-(DEDEAT), ummandla waseJoe Gqabi.
2. Isigaba soHlolo oluSisiseko: Inkqubo yoHlolo oluSisiseko iyalandelwa equka ukuqokelelwa kwenkqubo yokubandakanyeka koluntu kuquka ukubonisana nabathathi-nxaxheba abaphambili, uphando oluneenkukacha lwendawo, ucwangciso kunye nengxelo.
3. Kuya kwenziwa izifundo zeengcali. Eli nqanaba liza kufikelela kwisiphumo sokuveliswa kweNgxelo yoHlolo oluSisiseko kunye neSicwangciso soLawulo lweNdalo (i-EMP) esiza kungeniswa kwi-DEDEAT kwaye sisasazwe kubo bonke aBanomdla nabachaphazelekayo

ababhalsiweyo (ii-I&AP) kunye nabathathi-nxaxheba abaphambili ixesha leentsuku ezingama-30 lokuphawula.

4. Isigaba soHlolo oluSisiseko lokugqibela lweMpembelelo yeNdalo: Emva kokufunyanwa kwezimvo, iNgxelo yoHlolo oluSisiseko lokugqibela lweMpembelelo yeNdalo iya kugqitywa kwaye ingeniswe kwi-DEDEAT ukuze ivavanywe kwaye ikhutshwe imvume.

5. Ixesha lesibheni: Emva kokufumana iSigunyaziso seNdalo bonke abaThathi-nxaxheba ababhalsiweyo kunye nabathathi-nxaxheba abaphambili baya kwaziswa ngokufumaneka kwayo kwaye banikwe ithuba kunye neenkukacha zokungenisa isibheni kwisigqibo ukuba kuyimfuneko.

IIMPEMBELELO/IMIBA ENGOKUSINGOONGILEYO ECHONGIWEYO UKUZA KUTHI GA NGOKU

- Ukuphazamiseka komhlaba kunye nempembelelo yokuxinana ngenxa yemisebenzi yokwakha ecetywayo.
- Iimpembelelo ezincinci kumgangatho womoya ezidalwe luthuli kunye nokukhutshwa kwezithuthi ngexesha lezigaba zokwakha kunye nokusebenza.
- Iimpembelelo ezincinci zengxolo engqongileyo ezidalwe yimisebenzi yokwakha.
- Amathuba emisebenzi anokubakho ngexesha lesigaba sokwakha kunye nokusebenza.

INKQUBO YOKUTHATHA INXAXHEBA KOLUNTU

Inkqubo yokuThatha inxaxheba koLuntu (i-PPP) ichazwe phantsi koMgaqo-siseko Nombolo 41 weMigaqo ye-EIA ka-2014, njengoko ilungisiwe. Oku kuquka:

- Ukupapasha kwiphephandaba lasekuhlaleni ubuncinane elinye (i-Aliwal North Weekblad).
- Ukulungisa ibhodi yezaziso emnyango wesiza ngeelwimi ezininzi zasekuhlaleni (isiXhosa nesiNgesi)
- Ukubonelela ngesaziso esibhaliweyo ku:
 1. Abahlali besiza,
 2. Umnini/umntu olawula indawo,
 3. Abanini bomhlaba abakufutshane,
 4. Ilungu lebhunga lewadi kamasipala kunye nabahlawuli berhafu/umbutho woluntu,
 5. UMasipala weNgingqi ofanelekileyo kunye,
 6. Naliphi na icandelo likaRhulumente elinegunya malunga nayo nayiphi na into yomsebenzi.
- Ukugcina iRejista yeQela elinomdla nelichaphazelekayo (I&AP).
- Ukurekhoda naziphi na izimvo ezinxulumene neprojekthi ngaphakathi kwexesha elisemthethweni elivunyelweyo ngeenjongo zokuphawula (iintsuku ezingama-30 ukususela kumhla wopapasho).

Abachaphazelekayo bayamenywa ukuba babhalise njengamaqela anomdla nachaphazelekayo (ii-I&AP) kwaye bathathe inxaxheba ngokuchonga imiba exhalabisayo kunye nokwenza iziphakamiso zokuqwalaselwa malunga nophuhliso lweofisi zingadlulanga iintsuku ezingama-30 ukususela kumhla wokupapashwa kwentengiso kwiphephandaba lendawo.

Zonke izimvo/iinkxalabo ziya kuphendulwa kwaye zifakwe kwiRejista yokugqibela ye-I&AP eya kungeniswa kwi-DEDEAT ukuze bakwazi ukwenza isigqibo esinolwazi malunga nesindululo sophuhliso.

Nje ukuba iSigunyaziso sokuSingqongileyo sifunyenwe, siya kuhanjiswa kwii-I&AP ezibhalisiweyo ezinokubhenela kuMphathiswa okanye kwi-MEC yezeNdalo echasene nesigqibo se-DEDEAT.

IQELA LEPROJEKTHI

UMoira Cloete yingcali yoVavanyo lweNdalo oluZimeleyo (i-EAP) ezimeleyo ese-Elliot eMpuma Koloni. UNksz Cloete unesidanga se-BSc (Hons) kuLawulo lweNdalo, unamava amaninzi kuzo zonke iinkalo zoLawulo lweNdalo, kwaye usebenze kwiiprojekthi ezininzi ukusuka kwi-EIA kwiindawo zokulahlala inkunkuma ukuya ekujongeni kwindawo yeprojekthi zeendlela, amahlathi kunye namadama. UNksz Cloete ufumene amava amaninzi ekuqhubeni nasekugqibezeleni uvavanyo lwendalo kwindawo, uphicotho lwendalo, iinkqubo zolawulo lwendalo kunye neprojekthi zolawulo lwenkunkuma.

UNicole Malan yi-Assistant EAP yeMoira Cloete Environmental Consulting, ese-Ugie eMpuma Koloni. UNksz Malan unesidanga se-MSc kwiNdalo kwaye uqeqeshwe kulawulo lwendalo phantsi kukaNksz Moira Cloete kangangeminyaka emihlanu nangaphezulu.

IMISEBENZI NEEMFANELO ZE-I&AP

Olu xwebhu lusebenza njengesaziso sophuhliso lwe-ofisi olucetywayo oluqhubekayo kwaye lusebenza njengesicelo sazo naziphi na izimvo malunga nesindululo.

Ukuba unomdla wokubhalisa 'njengeQela elinomdla nelichaphazelekayo' kunye/okanye ekungeniseni izimvo okanye ulwazi ngezindululo, nceda uphendule ngezantsi ukubhalisa umdla wakho.

Izimvo kunye/okanye iiNgxaki: _____

Igama: _____

Umbutho: _____

Umnxeba/Inombolo yeSelfowuni: _____

Idilesi yemeyile: _____

Idilesi: _____

- Ngaba unqwenela ukubhaliswa 'njengeQela elinomdla neliChaphazelekayo kwinkqubo ye-EIA?

Ewe/Hayi _____

- Ingaba unayo nayiphi na inkxalabo okholelwa ukuba kufuneka iqwalaselwe kwi-EIA kwaye ungathanda ukwazisa iqela le-EIA? [Isithuba esongezelelekileyo sokuphawula sinikiwe ngasemva.]

- Ngaba kukho nawaphi na amaqela anomdla nachaphazelekayo (I&APs) ocinga ukuba kufuneka kudityanwe nawo ngexesha le-EIA? Ukuba ewe, nceda ubonise igama loqhagamshelwano, idilesi ye-imeyile kunye/okanye inombolo yomnxeba ukuze siqhagamshelane nalo mntu okanye lo mbutho:

ENKOSI NGENXAXHEBA YAKHO

Nceda ungenise izimvo usebenzisa ezi nkukacha zilandelayo:
Idilesi: Moira Cloete Environmental Consulting, Glen Stewart Estate, Kwelera, East London, 5259
Umnxeba: 073 500 1235/ Ifeksi: 086 590 2032
I-imeyile: moira@mcec.co.za
www.mcec.co.za

Umhla omiselweyo wobhaliso lwe-I&AP kunye nezimvo
11 Agasti 2026.

Ukuziphendulela: Ngokuthatha inxaxheba kule projekthi, ndiyavuma ukuba iinkukacha zam zobuqu zinokuqokelelwa, zisetyenziswe, kwaye zigcinwe ngendlela ekhuselekileyo nekhuselekileyo ngokwenjongo yale projekthi kuquka nenkqubo yesiBheni. Olu lwazi aluzokusetyenziswa ukundichonga. Ndiyavuma ukuqhagamshelwana naye ngamaxesha athile ukuhlaziya iinkukacha zam zobuqu.